

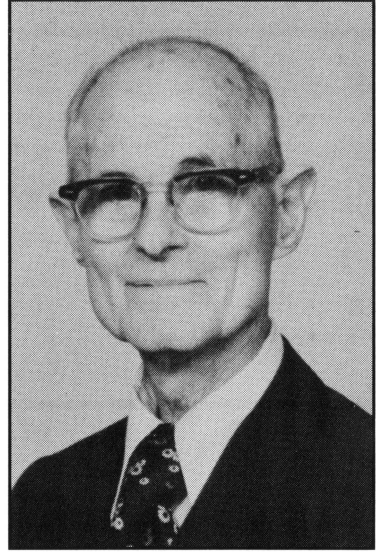
IN MEMORIUM

Theodore Lemuel Bissell (1899 - 1992)

Theodore L. Bissell, Associate Professor of Entomology Emeritus at the University of Maryland, died on 22 September, 1992 at Manor Care Nursing Home in Silver Springs, MD, at the age of 92 after having a stroke. Ted had a long and distinguished career in entomology. He was born along with twin sister Margaret on 9 December, 1899, in St. Marys, OH, to Sarah and Lemuel Bissell. He grew up in Cokesbury and Westover, MD and graduated from high school at the age of 16 in Princess Anne, MD in 1916. Ted attended and graduated from Maryland State College (later to become the University of Maryland in 1920). There, he was first exposed to entomology when he worked in the zoology laboratory and fell in love with the beetle collection.

Ted's first professional job was scouting for Japanese beetles near Philadelphia for the State of Pennsylvania. From 1921 to 1924, Ted worked for the U. S. Department of Agriculture Federal Horticulture Board as a plant quarantine inspector in Hawaii where he inspected bananas destined for California for the Mediterranean fruit fly. In 1924 he returned to the continent and entered Cornell University where he studied for one year receiving his M.S. in Entomology.

Ted and Isabel Chartres Veitch married in 1925. He then took a job with the U. S. Bureau of Entomology investigating pecan insect pests in Thomasville, GA. There, he described the black pecan aphid and worked on pecan weevil and other pecan pests. He was later transferred to Barnesville and Griffin, GA, where he continued pecan insect investigations for a short time, until he was laid off in 1933. He then obtained work at the Georgia Experiment Station at Griffin, where he worked on pecan, corn, cowpea, vegetable, and peanut insects until 1947. It was then that he accepted the job as Extension Entomologist for the University of Maryland where he earned a reputation as "Beetle Bissell." He retired from extension work in 1970 but continued independent research on his favorite insects, the aphids, and especially, the aphid complex of the Juglandaceae.



While living in Georgia, Ted Bissell sponsored a letter dated 18 March 1937 calling for all Georgians interested in entomology to meet on April 2-3 at Experiment, GA with the Georgia Academy of Science. This letter and several pre-1937 entomologists' family picnics led to the formation of the Georgia Entomological Society. Ted was elected as the first President of the Society in October 1938, serving as President at the May 1939 meeting at Milledgeville.

Ted was a long-time member of the Entomological Society of America, a former President of the Entomological Society of Washington, and an honorary member of the Maryland Entomological Society. He was a devout Methodist and served for 8 years on the common councils of the town of University Park, MD. His wife, Isabel, died in 1964, and he is survived by three children, Sarah Bissell Ervin, William Bissell, and Robert Bissell, ten grandchildren and 17 great-grandchildren.

W. Louis Tedders
USDA/ARS, Byron, GA